

PFAFFBERGSTRASSE 2, 8330 PFÄFFIKON ZH

3.5-Zimmer-Wohnung

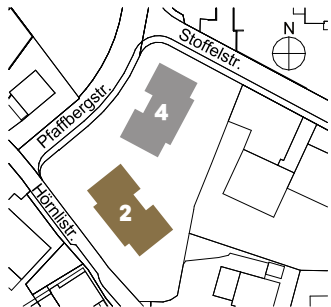
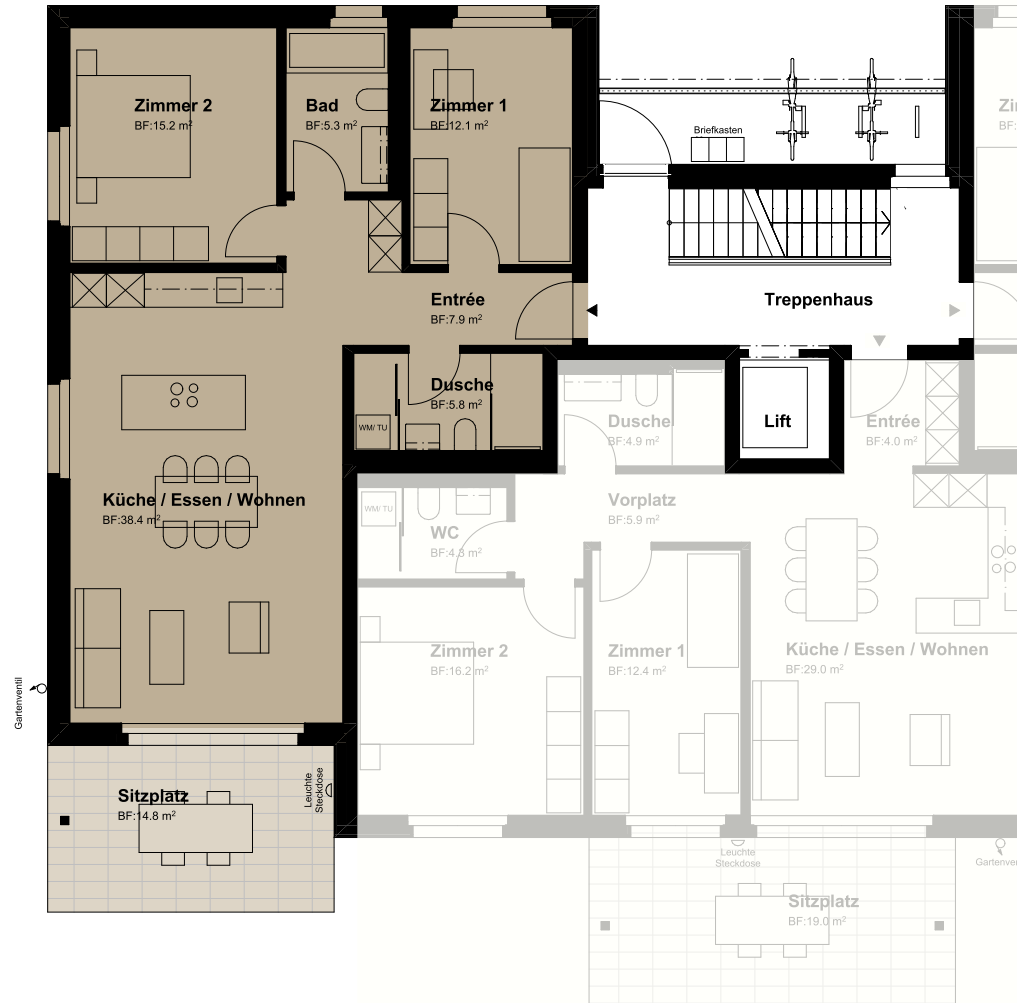
Erdgeschoss Wohnung 1/003

Wohnfläche 89,1m²

Umgebung 76,6m²

Keller 12,6m²

FELSEN GRUND.



Mst.1:100 | A4

0 1 3m